



Curriculum from Design to Apportionment: Enrollment Management at 30,000 ft

ASCCC Spring Plenary Session April 10, 2014

John Stankas, San Bernardino Valley College

Elizabeth Atondo, Pierce College

Marie Boyd, Chaffey College

ASCCC Curriculum Committee



Timeline 2006-2013

- Fall term FTES from Datamart
(<http://datamart.cccco.edu/>)

• What happened from 2006 – 2013?

Timeline 2006-2013

- 2006 – Chasing FTES
- 2007 – Basic Skills as a Foundation for Student Success
- 2009 – Peak Enrollment Systemwide
- Then What Happened?



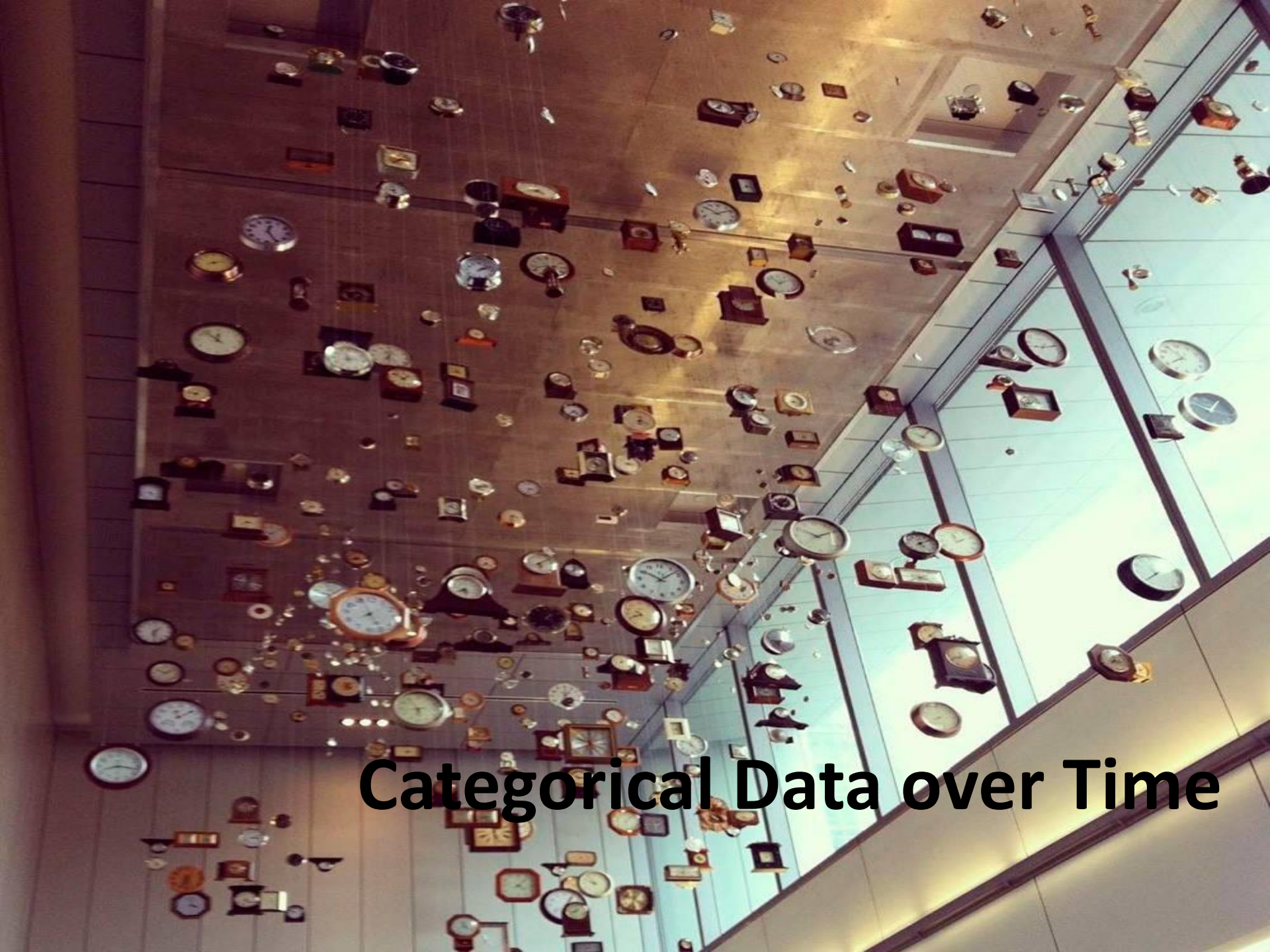
Timeline 2006-2013

- 2009 – 12 Slash and Burn Economic Downturn
- Limitations on Apportionment (W)
- 2012 End of Credit Course Repetition in most circumstances



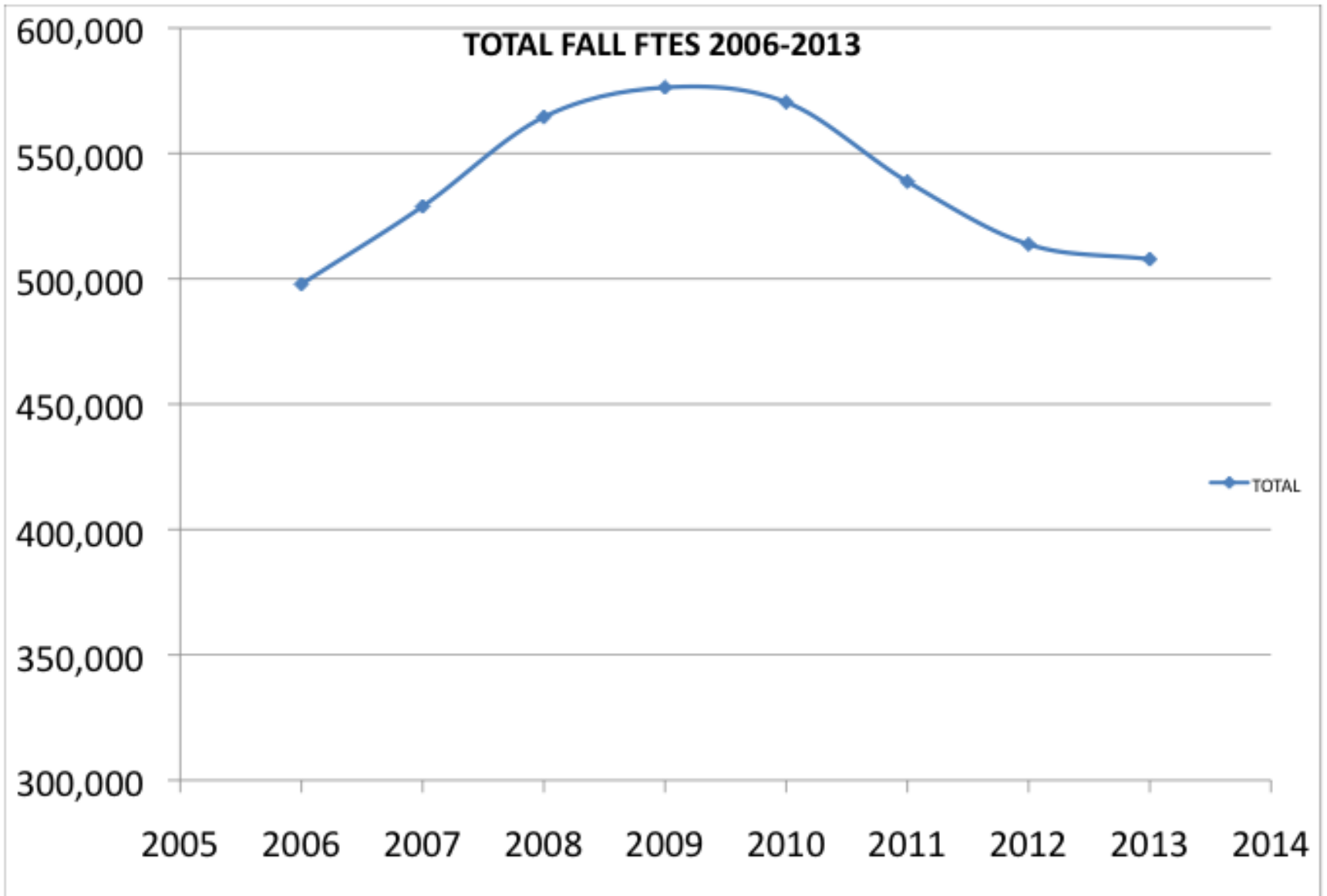
Timeline 2006-2013

- 2013 – stabilization in FTES
- Let's look at some enrollment data from a system perspective

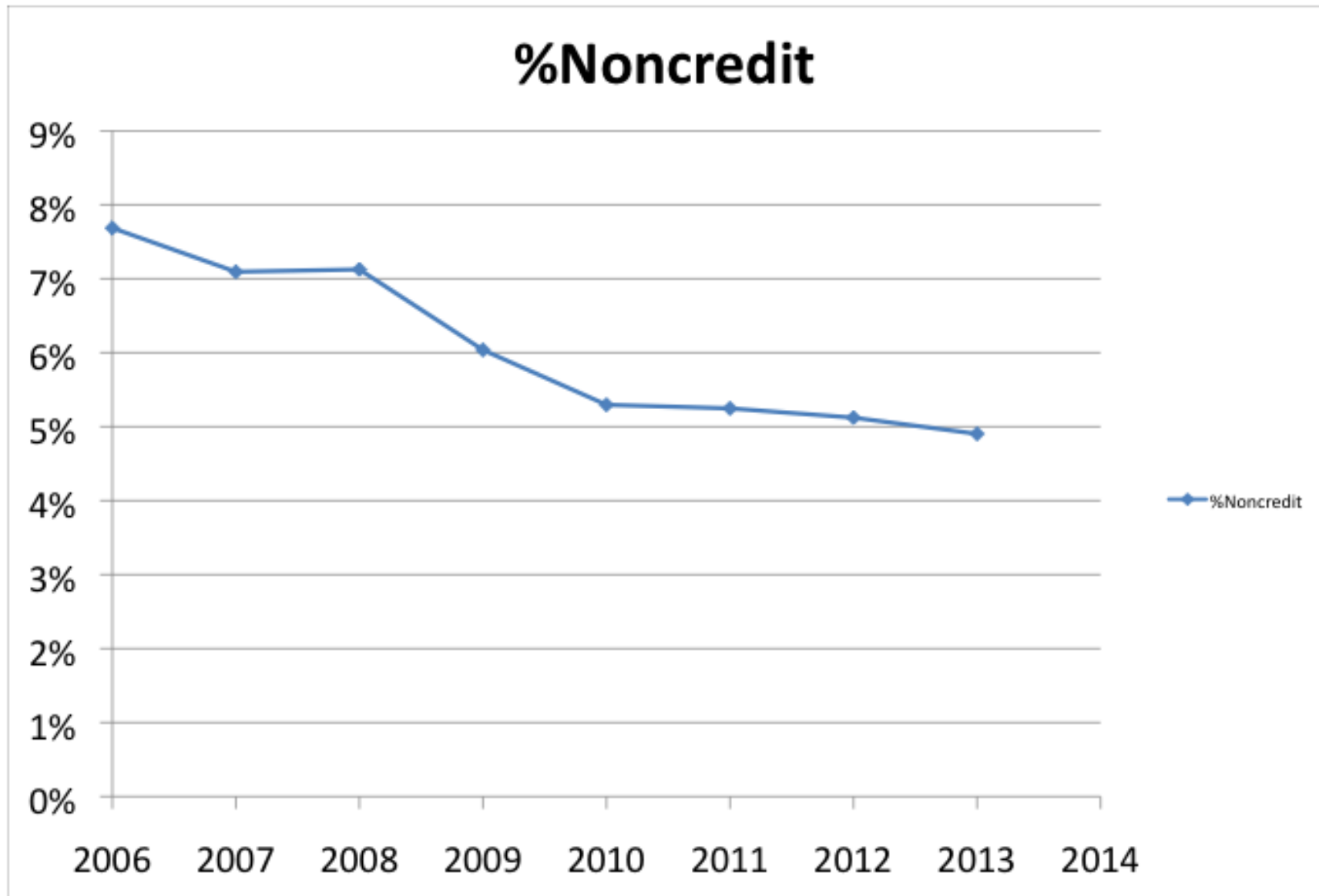


Categorical Data over Time

TOTAL FALL FTES

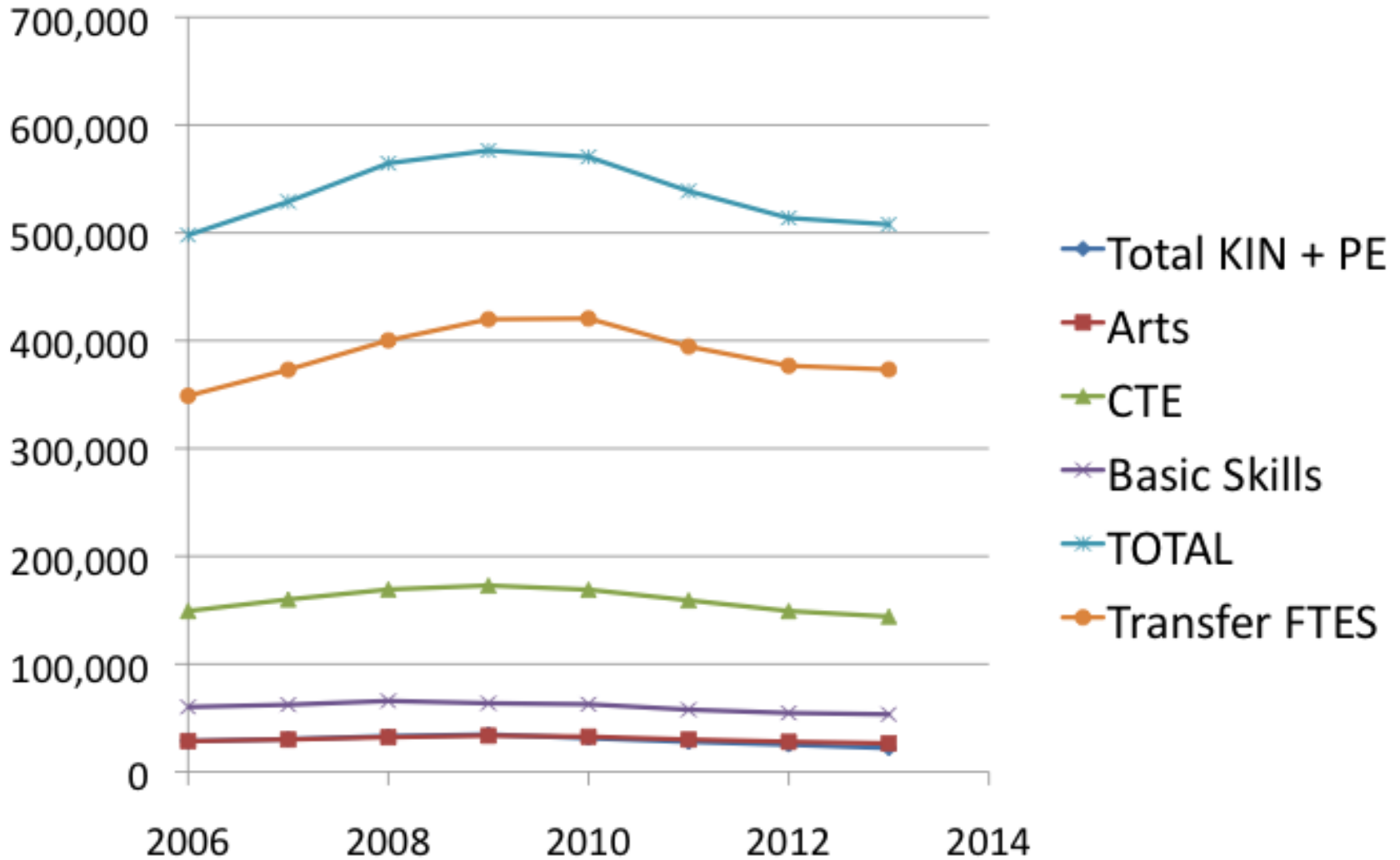


% FTES from Noncredit

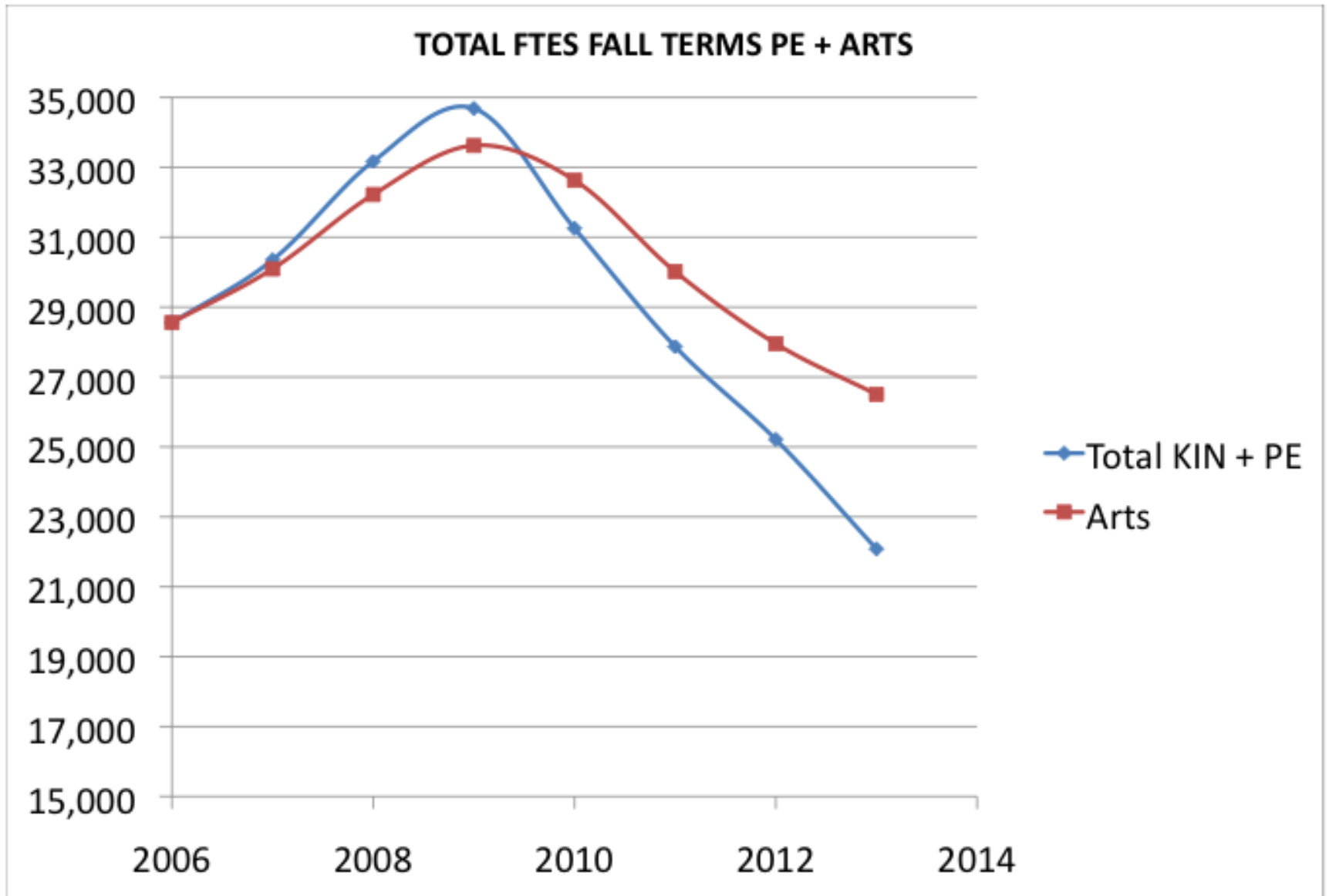


FALL FTES BY CATEGORY

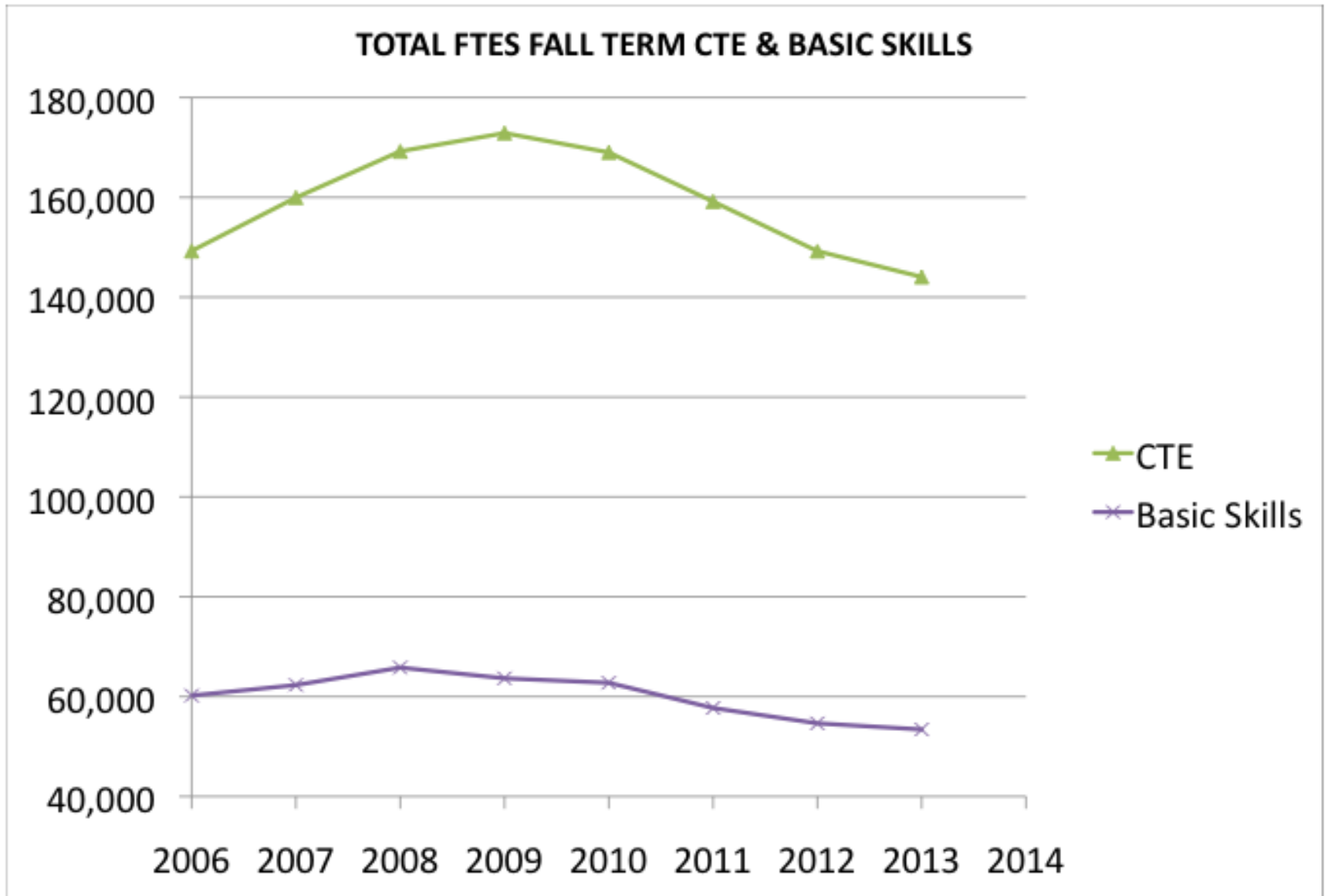
TOTAL FTES FOR FALL TERM



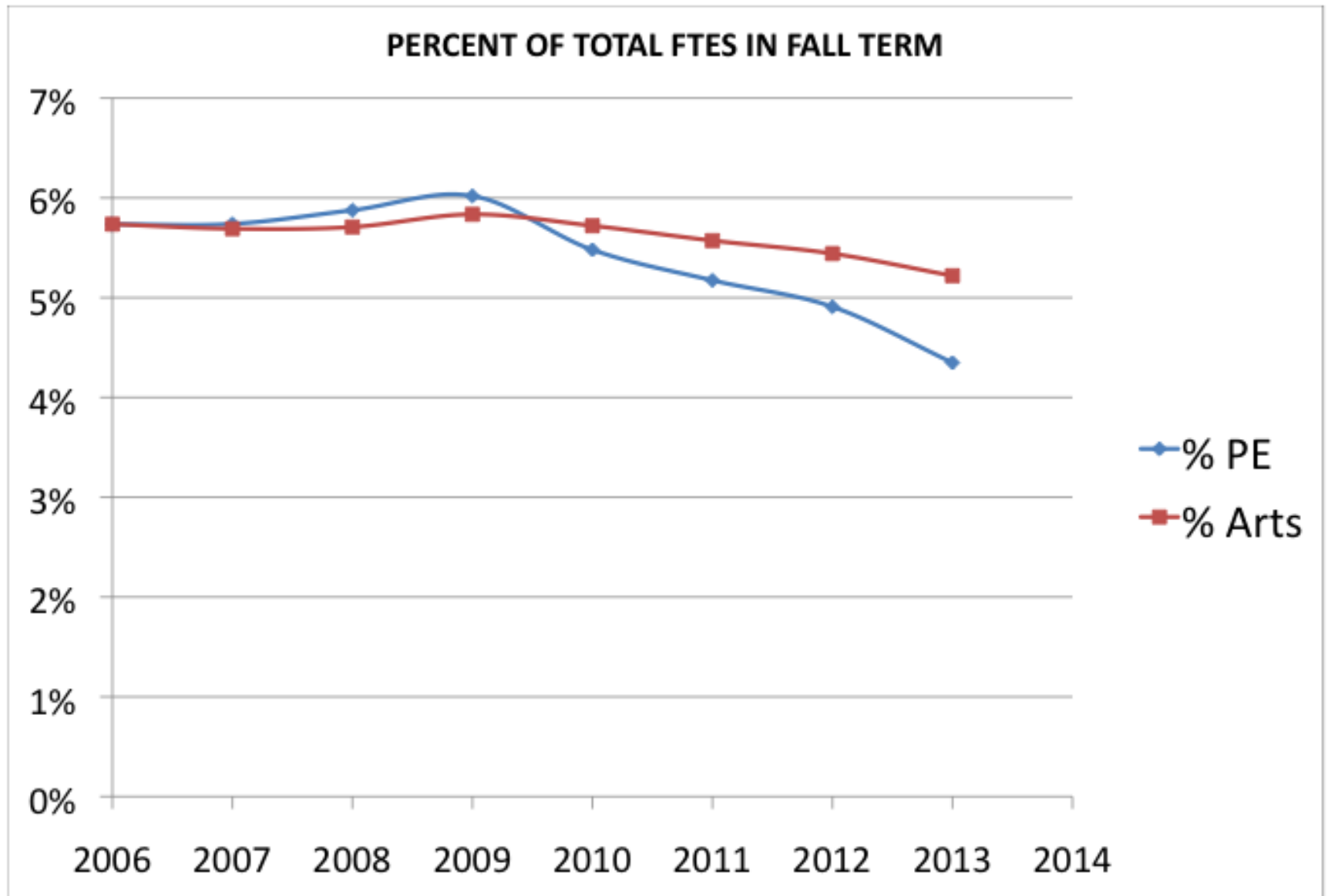
FALL FTES PE + ARTS



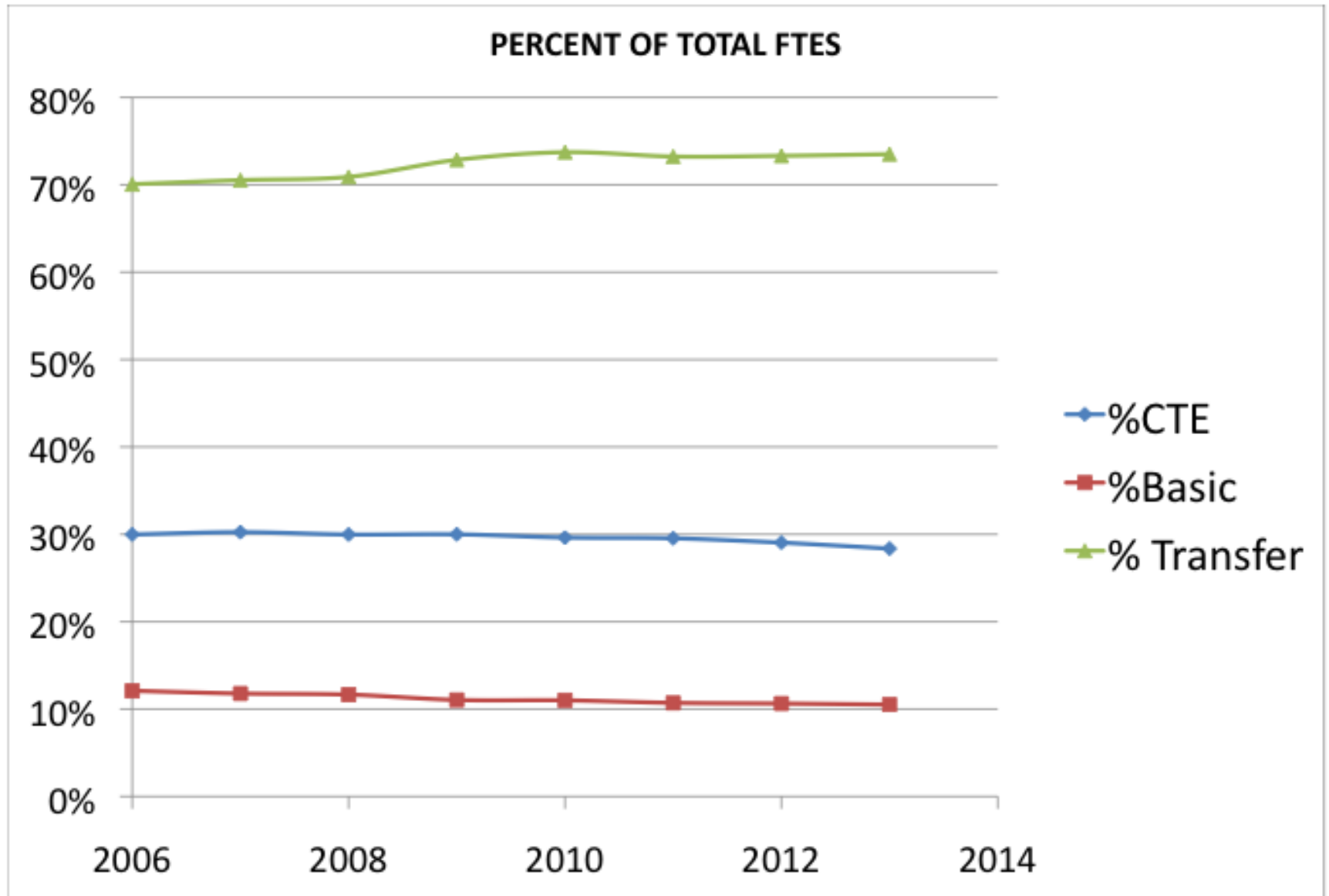
FALL FTES CTE & BASIC SKILLS



$(\text{FTES:ARTS}/\text{FTES:TOTAL}) \times 100 = \% \text{ OF TOTAL FTES}$

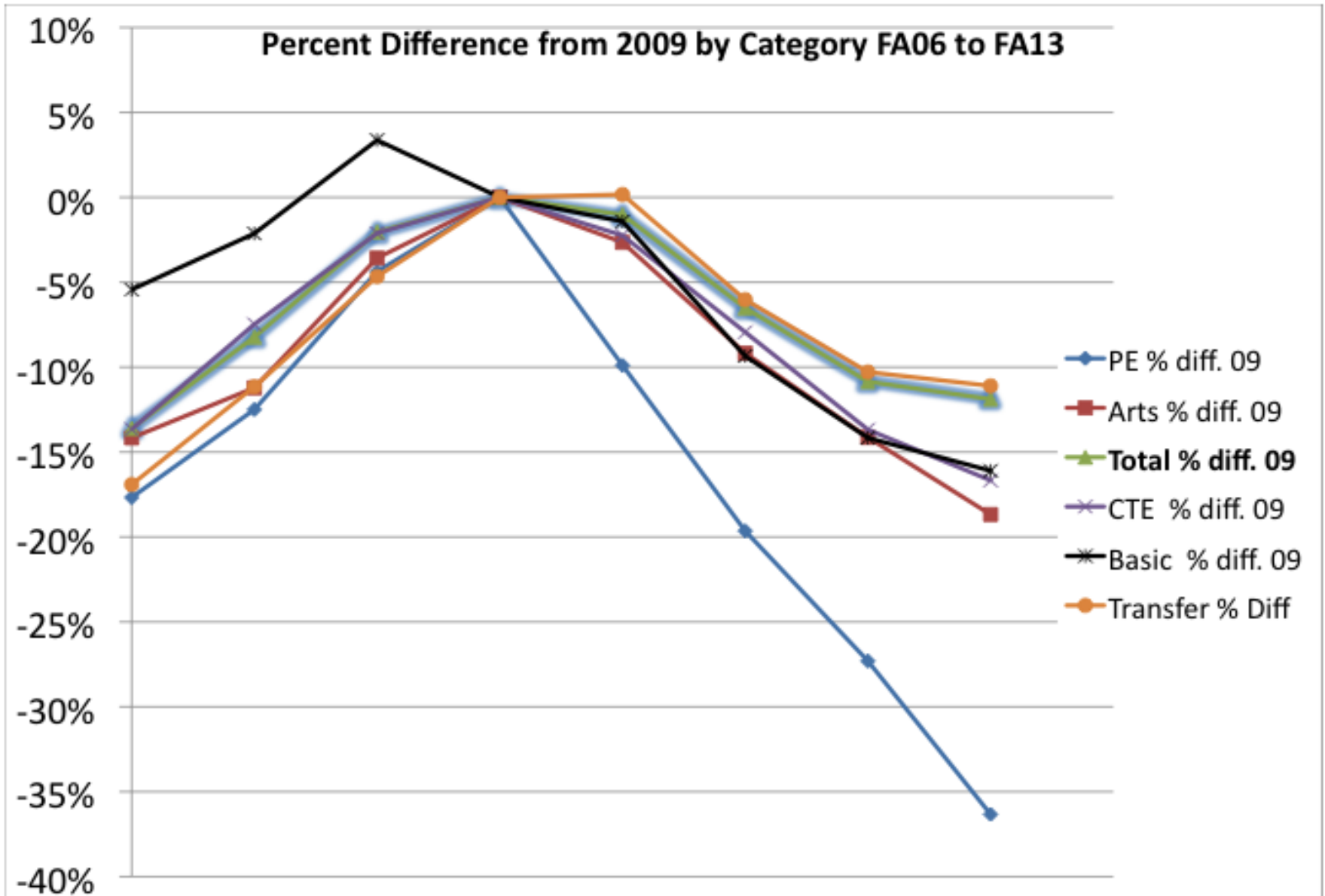


$(\text{FTES:CTE} / \text{FTES:TOTAL}) \times 100 = \% \text{ OF TOTAL FTES}$



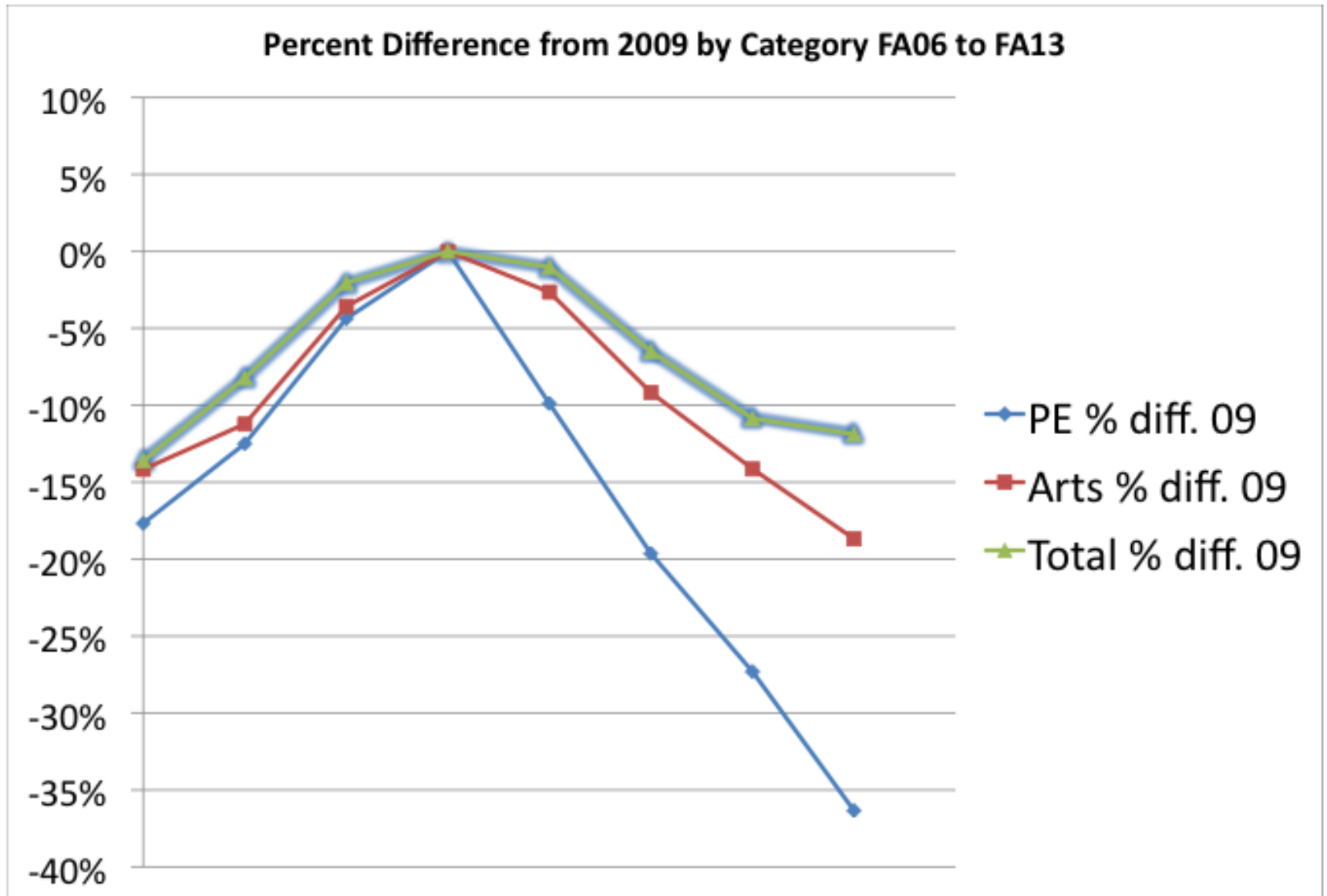
$$\frac{((\text{FTESFA06:PE} - \text{FTESFA09:PE})/\text{FTESFA09:PE}) \times 100 =$$

PERCENT DIFFERENCE



$$((\text{FTESFA06:PE} - \text{FTESFA09:PE}) / \text{FTESFA09:PE}) \times 100 =$$

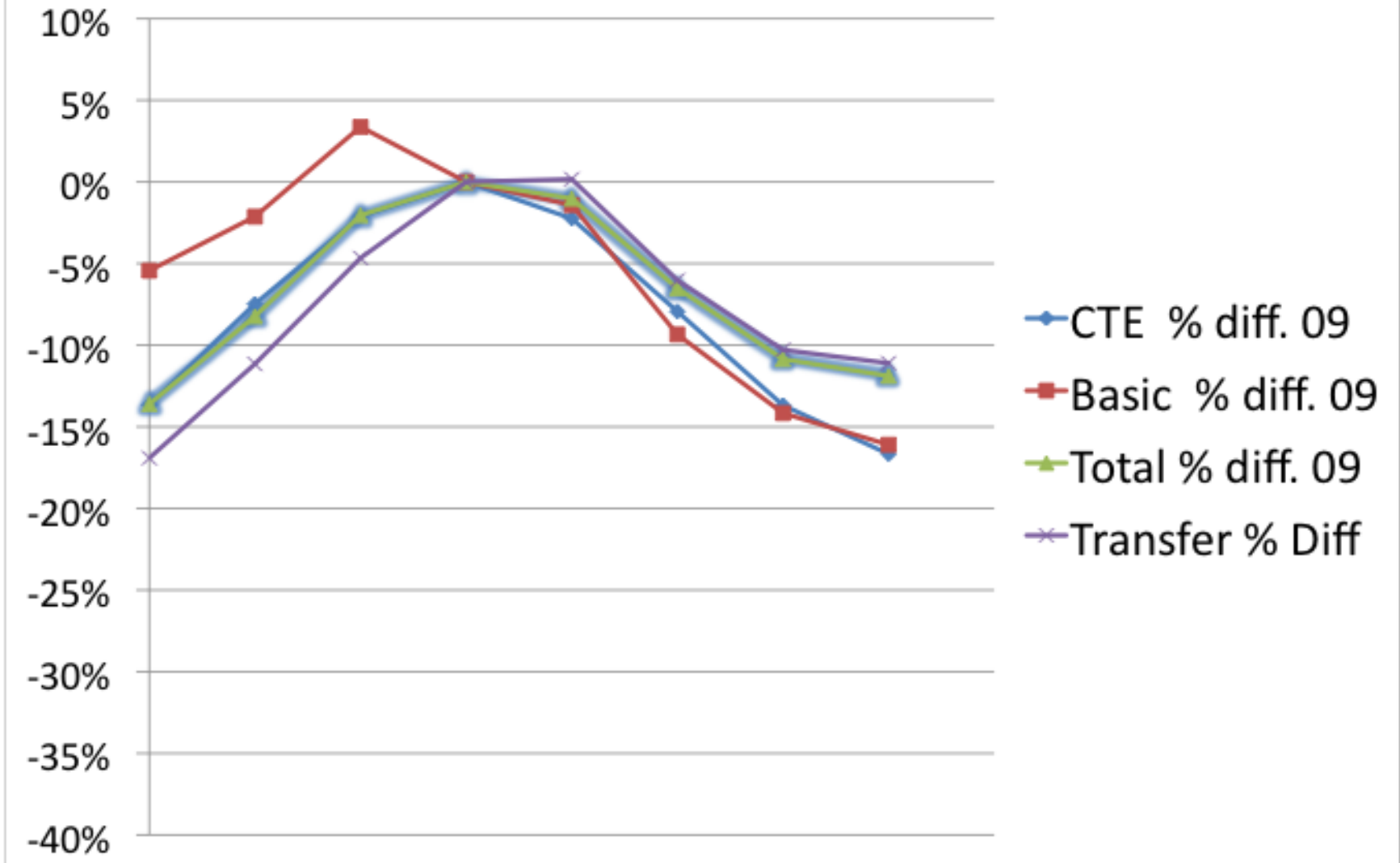
PERCENT DIFFERENCE



$$\left(\frac{\text{FTESFA06:CTE} - \text{FTESFA09:CTE}}{\text{FTESFA09:CTE}}\right) \times 100 =$$

PERCENT DIFFERENCE

Percent Difference from 2009 by Category FA06 to FA13



Looking Ahead

- Enrollment Priorities – Fall 2014
- 100-unit limit
- Economic upturn – Growth money
- AB 86 Regional Consortia with Adult Ed.
- Enrollment Management

When you are dead, you don't know that you are dead. It is difficult only for the others.

It is the same when you are stupid.